

Technology for Inclusion

Rosalee Wolfe
@RosaleeWolfe



2016

ANITA BORG INSTITUTE
**GRACE
HOPPER**
CELEBRATION
OF WOMEN IN COMPUTING

 #GHC16

ANITA BORG
INSTITUTE



Association for
Computing Machinery

Technology for Inclusion: ASL avatars

- A thought experiment
- Challenges of the Deaf community in the U.S.
- The ASL Avatar Project at DePaul University
- Inclusion

A thought experiment



Stressful, life-critical activities



Some Challenges of the Deaf community in the U.S.



An invisible, underserved population

- Inadequate access to health care

Kuenburg, A., Fellingner, P. & Fellingner, J. (2016). Health Care Access Among Deaf People, *Journal of Deaf Studies and Deaf Education*, 1-10.

- High school graduates underprepared in math, science and reading

Nagle, K., Newman, L. A., Shaver, D. M., & Marschark, M. (2016). College and Career Readiness: Course Taking Of Deaf and Hard of Hearing Secondary School Students. *American annals of the deaf*, 160(5), 467-482.

- Underemployment

Perkins-Dock, R. E., Battle, T. R., Edgerton, J. M., & McNeill, J. N. (2015). A Survey of Barriers to Employment for Individuals Who Are Deaf. *Journal of the American Deafness & Rehabilitation Association (JADARA)*, 49(2).

It's not simply about sound ...

American Sign Language (ASL)

- A natural language in its own right
- Not simply gesture
- Not fingerspelling
- Grammar is radically different from English.

It's not simply about sound ...

Deaf community

- Uses ASL as its first language.
 - English is a second language.
 - Exclusion: Spoken English
 - Exclusion: *Written* English
-

The ASL Avatar Project at DePaul University

asl.cs.depaul.edu





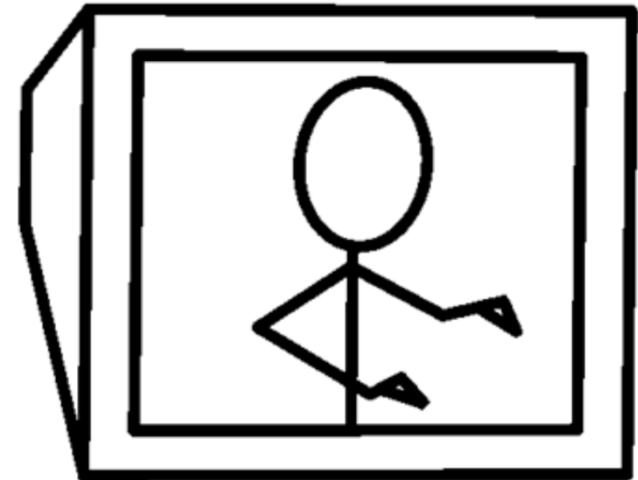
Goal

- Greater inclusivity via better access to English

Process overview



English
text



Applications

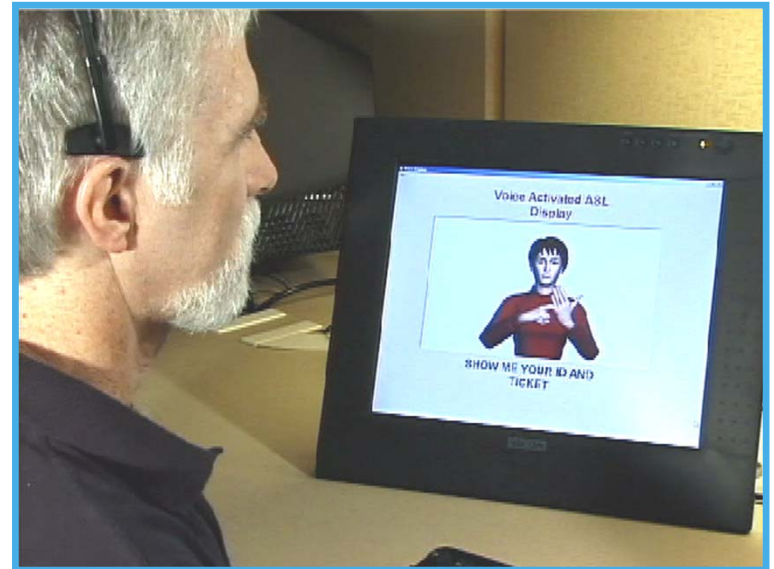
Used for

- Working with deaf clients
- Interpreter Training
- Deaf education



Achievements and awards

- An airport security prototype presented at a TSA-sponsored conference on disabilities
- *Speech Technology*: Most Innovative Solutions Award
- Illinois Volunteer Service Award



Inclusion

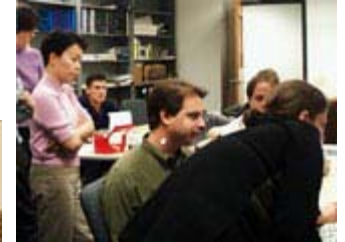


How is the ASL Avatar Project inclusive?

- Project goals
- Multiple disciplines
- Environment
- Leadership

Accomplishments

Nora All Marjana E Allison Lewis (DePaul, B.S. '12)
Karen A Dan Ethric Ryan Leyesa (DePaul, B.S. '02)
Jamita E John Falla Jade Mansueto (DePaul, M.S. '05)
Souad B Bill Gobbe Tino Perez (DePaul, M.S. '12)
Tahseen Natalie Gu Toni Perri Carolyn Taylor (DePaul M.S. '00)
Larwan William H Khairul Ri Farah Thomas (DePaul B.S. '13)
Melissa Damien H Lina Rauc Julie Torkelson (DePaul M.S. '10)
Stacey E Amy Hitt (Peter Sch Jorge Toro (DePaul Ph.D. '05)
Jeff Carr Gary Honc Jerry Schi Ryan Tsang (DePaul B.S., '05)
Lesley C Sarah Johi Lindsay S Jeff Young (DePaul M.S. '05)
Pattaraç Ashwini K Brent Shi Miaoqi Zhu (DePaul PhD '14)
Brock Ci Robyn Kel Brent Shiver (DePaul, PhD '13)
Mary Jo Brian Kircl Lori Smallwood (DePaul, M.S. '03)
Jason D Brian Kon Jessica Stec (DePaul, B.S. '16)
Tim Dev Bret Kroll Marie Stumbo (DePaul, B.S. '14)
Cynthia Ken Kulins Anna Suh (DePaul, M.S. '05)
Sarah El Tony Lavo Irena Svidovsky (DePaul, B.S., '04)



To see a demo or learn
more about the project,
visit
<http://asl.cs.depaul.edu>



Thank you

ANITA BORG INSTITUTE
**GRACE
HOPPER
CELEBRATION
OF WOMEN IN COMPUTING**

Feedback?

**Rate and review the session
on our mobile app**

Download at <http://bit.ly/ghc16app>
or search GHC 16 in the app store



Association for
Computing Machinery